



## Digital Twin Solution for Smart Cities

### COMPREHENSIVE VIEW OF A CITY

Cities are facing challenges due to rapid population growth, ongoing urbanization, and unprecedented infrastructure demands. Leverage Bentley's digital twin solution to improve your city's infrastructure and quality of life by:

- ◆ Operating and maintaining the city infrastructure more efficiently
- ◆ Empowering transparency and engagement with the public
- ◆ Visualizing a variety of data with situational intelligence
- ◆ Providing an efficient, accessible, secure interface to all stakeholders while easily sharing ideas

### CONNECT AND MANAGE DATA

The digital twin enables city leaders to self-serve both project and asset information in a visually immersive environment. The flexible, open, cloud-based architecture integrates your data sources with engineering-grade quality, ensuring reliable decision-making and optimized workflows to support your city's critical operations. This solution is intentionally designed for ease of use by your users and can be effortlessly updated to accommodate data, functionality, and integration needs.

### INCREASE EFFICIENCY, SAFETY, AND RESILIENCY

- ◆ Simplified access to trusted information in your organization and the context given by a complete picture of a city empowers the team to make better decisions.
- ◆ Quick access to information in customized views and dashboards replaces manual data collection and allows immediate response to incidents.
- ◆ Remote accessibility, virtual review, and preparation for site visits increases safety and decreases unnecessary service disruptions.

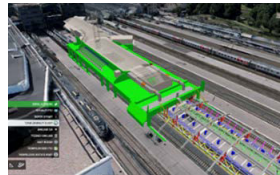
### CAPABILITIES THAT BRING YOUR CITY INTO THE FUTURE

#### Layered Visualization

- ◆ Monitor assets at the portfolio level, visualize changes, manage alerts, and make decisions based on data from across the enterprise. Collaborate across all departments with the same evergreen view. Save time and energy when conducting audits.

#### Open Integrations

- ◆ Easily integrate external systems to visualize data without the need for an importing tool.



### KEY BENEFITS

- ◆ Improved collaboration and citizen engagement
- ◆ Optimized workflows and minimized disruptions to citizen life
- ◆ Stability and accessibility to all stakeholders
- ◆ Scale to handle the growth of urbanization
- ◆ More data insights and better decision-making
- ◆ Visibility over multiple projects and access to data siloed in other teams or systems
- ◆ Enable self-service across the organization to visualize and make data-driven decisions
- ◆ Provide real-time visibility